

The Township of Cavan Monaghan

By-law No. 2024-69

Being a by-law to assume and dedicate Kennedy Drive as a Public Highway

Whereas pursuant to Section 31 (2), Municipal Act, 2001, S.O. 2001, c.25, s. 31 (2); 2006, a municipality may by by-law establish a highway;

And Whereas the Township of Cavan Monaghan is the owner of the lands described in Section 1 of this By-law;

And Whereas a municipality may by by-law assume for public use a road allowance, highway, street or land shown on a registered plan of survey.

Now Therefore, be it enacted as a By-law of the Township of Cavan Monaghan as follows:

1. That the Township of Cavan Monaghan hereby incorporates Kennedy Drive on Plans 45M-249 into the public highway system of the Township as part of Kennedy Drive.

Read a first, second and third time and passed this 16th day of December 2024.

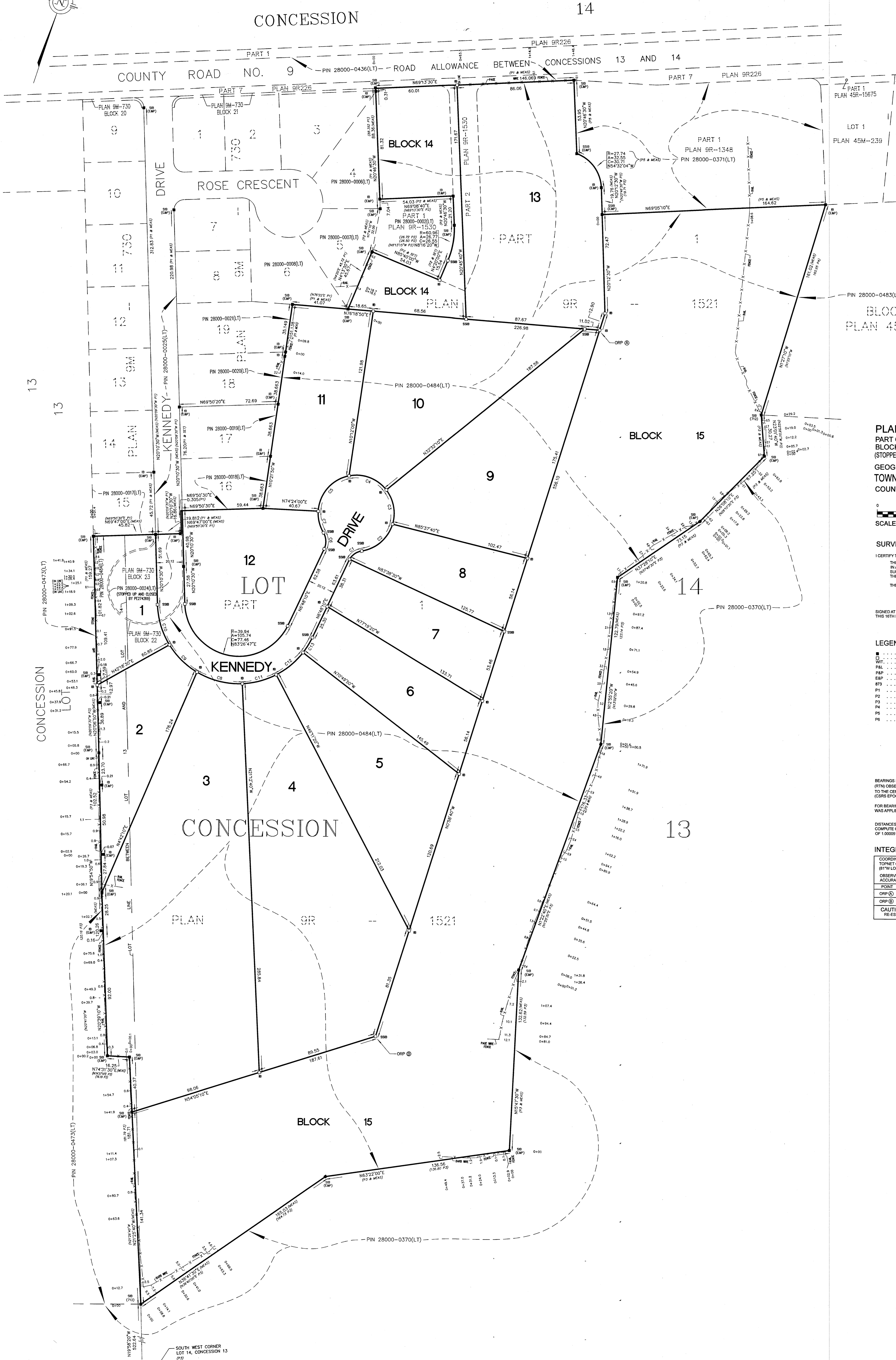
Matthew Graham
Mayor

Cindy Page
Clerk

I CERTIFY THAT THIS PLAN IS REGISTERED
IN THE LAND REGISTRY OFFICE FOR THE
LAND TITLES DIVISION OF PETERBOROUGH
ON THE 30th DAY OF SEPTEMBER, 2017 AND ENTERED IN THE
REGISTER FOR PINS 28000-0484(LT) & 28000-0370(LT)
AND REQUIRED DOCUMENTS ARE REGISTERED
AS PLAN DOCUMENT No. PE 277980 (LT).

L. ELLIOTT SMITH
REPRESENTATIVE FOR THE LAND REGISTRAR

NOTE: THIS PLAN COMPRISES ALL OF PIN 28000-0484(LT) AND 28000-0370(LT)



APPROVED UNDER SECTION 51 OF THE PLANNING ACT
THIS 21st DAY OF SEPTEMBER, 2017

Brian Weir
DIRECTOR OF PLANNING
COUNTY OF PETERBOROUGH

OWNER'S CERTIFICATE

- THIS IS TO CERTIFY THAT:
1) LOTS 1 THROUGH 13, AND BLOCKS 14 AND 15, ALL INCLUSIVE, HAVE BEEN LAID OUT IN ACCORDANCE WITH THE INSTRUCTIONS.
2) THE STREET KENNEDY DRIVE, HEREBY DEDICATED TO THE TOWNSHIP OF CAVAN, IS A PUBLIC HIGHWAY.

DATED THIS 5th DAY OF SEPTEMBER, 2017

CHRISTOPHER E. MUSGLOW
PRESIDENT
WOODVIEW PROPERTIES INC.

I HAVE THE AUTHORITY TO BIND THE CORPORATION

PLAN OF SUBDIVISION OF
PART OF LOTS 13 AND 14, CONCESSION 13
BLOCKS 22 AND 23, PLAN 9M-730
(STOPPED UP AND CLOSED BY PE274269)
GEOGRAPHIC TOWNSHIP OF CAVAN
TOWNSHIP OF CAVAN-MONAGHAN
COUNTY OF PETERBOROUGH

SCALE: 1:1000

SURVEYOR'S CERTIFICATE

I CERTIFY THAT:
THIS SURVEY AND PLAN ARE CORRECT AND ARE
IN ACCORDANCE WITH THE SURVEY ACT, THE
SURVEYORS ACT AND THE LAND TITLES ACT AND
THE REGULATIONS MADE UNDER THEM.
THE SURVEY WAS COMPLETED ON 14th OF AUGUST 2017

SIGNED AT LAKEFIELD, ONTARIO
THIS 18th DAY OF AUGUST, 2017

CHRISTOPHER E. MUSGLOW
ONTARIO LAND SURVEYOR

- LEGEND
DENOTES SURVEY MONUMENT FOUND
DENOTES SURVEY MONUMENT PLANTED
DENOTES WITNESS
DENOTES PIERCE & LYONS, O.L.S.
DENOTES PIERCE & PIERCE, O.L.S.
DENOTES ELLIOTT & PARR, O.L.S.
DENOTES W.A. BEISINGER, O.L.S.
DENOTES PLAN 9M-730
DENOTES PLAN 9M-1530
DENOTES PLAN 9M-1521
DENOTES PLAN 45M-239
DENOTES PLAN 9M-1348
DENOTES UNDEPOSITED PLAN BY ELLIOTT & PARR, O.L.S. DATED 16 JUNE, 1993

BEARINGS SHOWN HEREON ARE UTM GRID, DERIVED FROM REAL TIME NETWORK (RTN) OBSERVATIONS ON POINTS A AND B LISTED HEREON AND ARE REFERRED TO THE CENTRAL MERIDIAN OF UTM ZONE 17 (81° WEST LONGITUDE) NAD 83 (CSRS EPOCH 1997.0).

FOR BEARING COMPARISONS, A ROTATION OF 1°45'00" COUNTER CLOCKWISE WAS APPLIED TO BEARINGS SHOWN ON PLANS P1, P2, P3, P5 & P6

DISTANCES SHOWN HEREON ARE GROUND DISTANCES AND CAN BE USED TO COMPUTE GRID DISTANCES BY MULTIPLYING BY A COMBINED SCALE FACTOR OF 1.000516171

INTEGRATION DATA table with columns: POINT, UTM NORTHING, UTM EASTING. Rows include ORP (A), ORP (B), and ORP (C).

CAUTION: COORDINATES CANNOT, IN THEMSELVES, BE USED TO RE-ESTABLISH CORNERS OR BOUNDARIES SHOWN ON THIS PLAN.

CURVE TABLE table with columns: NUM, ARC, RADIUS, BEARING, DISTANCE. Lists curve data for points C1 through C13.